



Lines, tubes, and devices

Abnormal central venous catheter positioning

What will I gain from this video?

After watching this video, you will know how to identify incorrectly positioned CV lines.

Complications of CVC placement

- Pneumothorax
- Pneumomediastinum
- Hydrothorax
- Hemothorax
- Cardiac tamponade
- Hematoma
- Arterial puncture
- Catheter positioned within an artery
- Knot
- Catheter line broken

Case 1



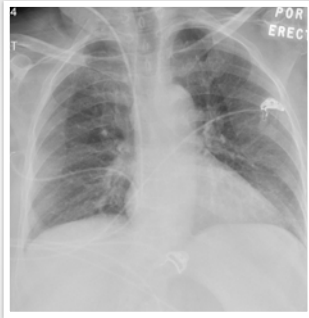
Case 2



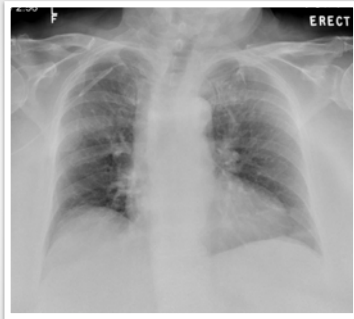
Case 3



Case 4



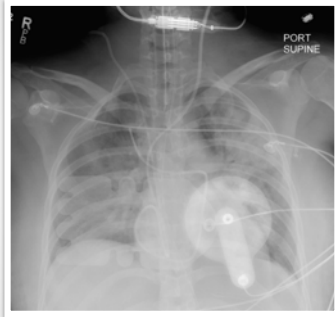
Case 5



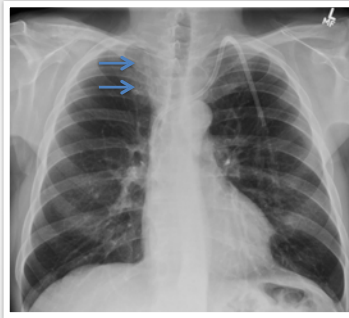
Case 6



Case 7



Case 8



Central venous catheters can be positioned too far or not far enough.

Central venous catheters can be positioned aberrantly in arteries or outside of the vessel.

Central venous catheters can form kinks or even knots.
